



INDOFINE Chemical Company, Inc.

121 Stryker Lane, Bldg. 30, Suite 1 • Hillsborough, NJ 08844 • U.S.A.

Phone: (908) 359-6778 • FAX: (908) 359-1179

website: www.indofinechemical.com

e-mail: chemical@indofinechemical.com

CERTIFICATE OF ANALYSIS

Cat No.: 19-626

Product: 6,4'-DIMETHOXY-7-HYDROXYISOFLAVONE

CAS Number: [550-79-8]

Lot Number: 0306105

Chemical Formula: C₁₇H₁₄O₅

Molecular Weight: 298.30

Melting Point: 233-235°C

Appearance: Off White powder

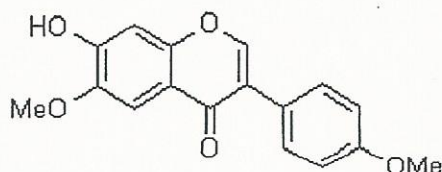
TLC: Hexane: Ethyl acetate (1:1)

Solubility: DMSO

NMR Spectrum: Enclosed

Purity:(HPLC) 96.45%

Storage: Cool dry place





INDOFINE Chemical Company, Inc.

121 Stryker Lane, Bldg. 30, Suite 1 • Hillsborough, NJ 08844 • U.S.A.

Phone: (908) 359-6778 • FAX: (908) 359-1179

website: www.indofinechemical.com

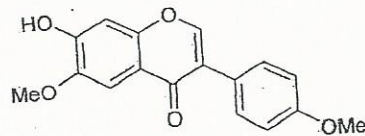
e-mail: chemical@indofinechemical.com

HPLC ANALYSIS

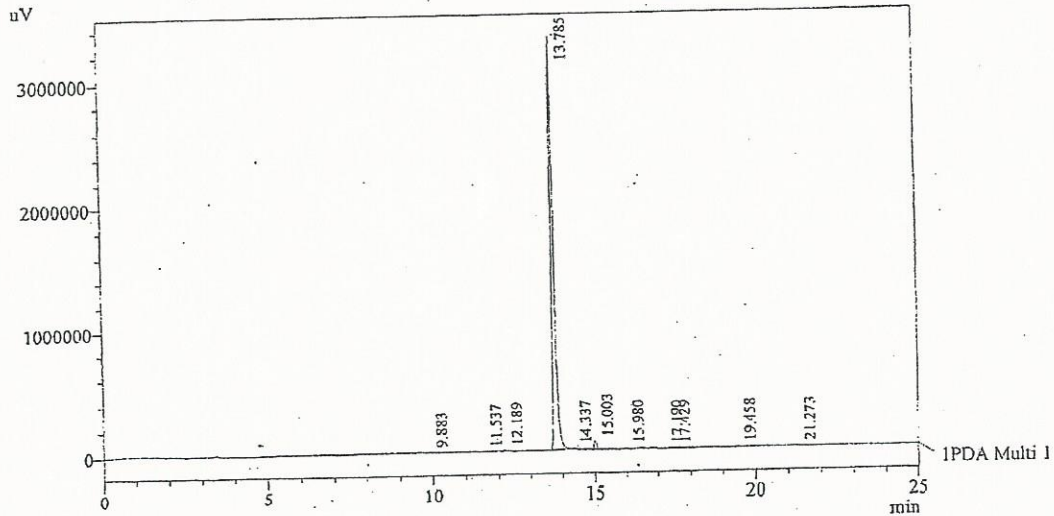
Acquired by : Sanjeev
 Sample Name : 6,4'-Dimethoxy-7-hydroxyisoflavone
 Sample ID : Lot No:-0306105
 Injection Volume : 20 uL
 Data Filename : 080412J.lcd
 Method Filename : Lincar Gradient.M.lcm

Catalog no.: 19-626
 Product name: 6,4'-Dimethoxy-7-hydroxyisoflavone
 Lot No.: 0306105

Column : LUNA C-18(2), (250mm x4.6mm 5.0µ)
 Flow : 1.000 mL/min.
 Mobile Phase : A(0.05% TFA in water) B(Acetonitrile)
 0.01 90 10
 12.0 10 90
 20.0 10 90
 23.0 90 10
 25.0 90 10



Chromatogram
 6,4'-Dimethoxy-7-hydroxyisoflavone D:promonence



1 PDA Multi 1 / 254nm 4nm

PeakTable

| Peak# | Name | Ret. Time | Area | Area % | Relative Retention Time |
|-------|-----------|-----------|----------|--------|-------------------------|
| 1 | RT:9.883 | 9.883 | 74077 | 0.35 | 0.72 |
| 2 | RT:11.537 | 11.537 | 6630 | 0.03 | 0.84 |
| 3 | RT:12.189 | 12.189 | 52208 | 0.25 | 0.88 |
| 4 | RT:13.785 | 13.785 | 20457703 | 96.45 | 1.00 |
| 5 | RT:14.337 | 14.337 | 28256 | 0.13 | 1.04 |
| 6 | RT:15.003 | 15.003 | 395189 | 1.86 | 1.09 |
| 7 | RT:15.980 | 15.980 | 58375 | 0.28 | 1.16 |
| 8 | RT:17.190 | 17.190 | 8533 | 0.04 | 1.25 |
| 9 | RT:17.429 | 17.429 | 7227 | 0.03 | 1.26 |
| 10 | RT:19.458 | 19.458 | 49678 | 0.23 | 1.41 |
| 11 | RT:21.273 | 21.273 | 73750 | 0.35 | 1.54 |
| Total | | | 21211626 | 100.00 | |



INDOFINE Chemical Company, Inc.

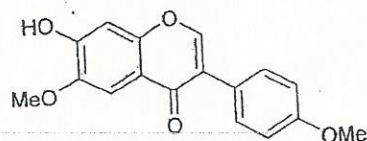
121 Stryker Lane, Bldg. 30, Suite 1 • Hillsborough, NJ 08844 • U.S.A.

Phone: (908) 359-6778 • FAX: (908) 359-1179

website: www.indofinechemical.com

e-mail: chemical@indofinechemical.com

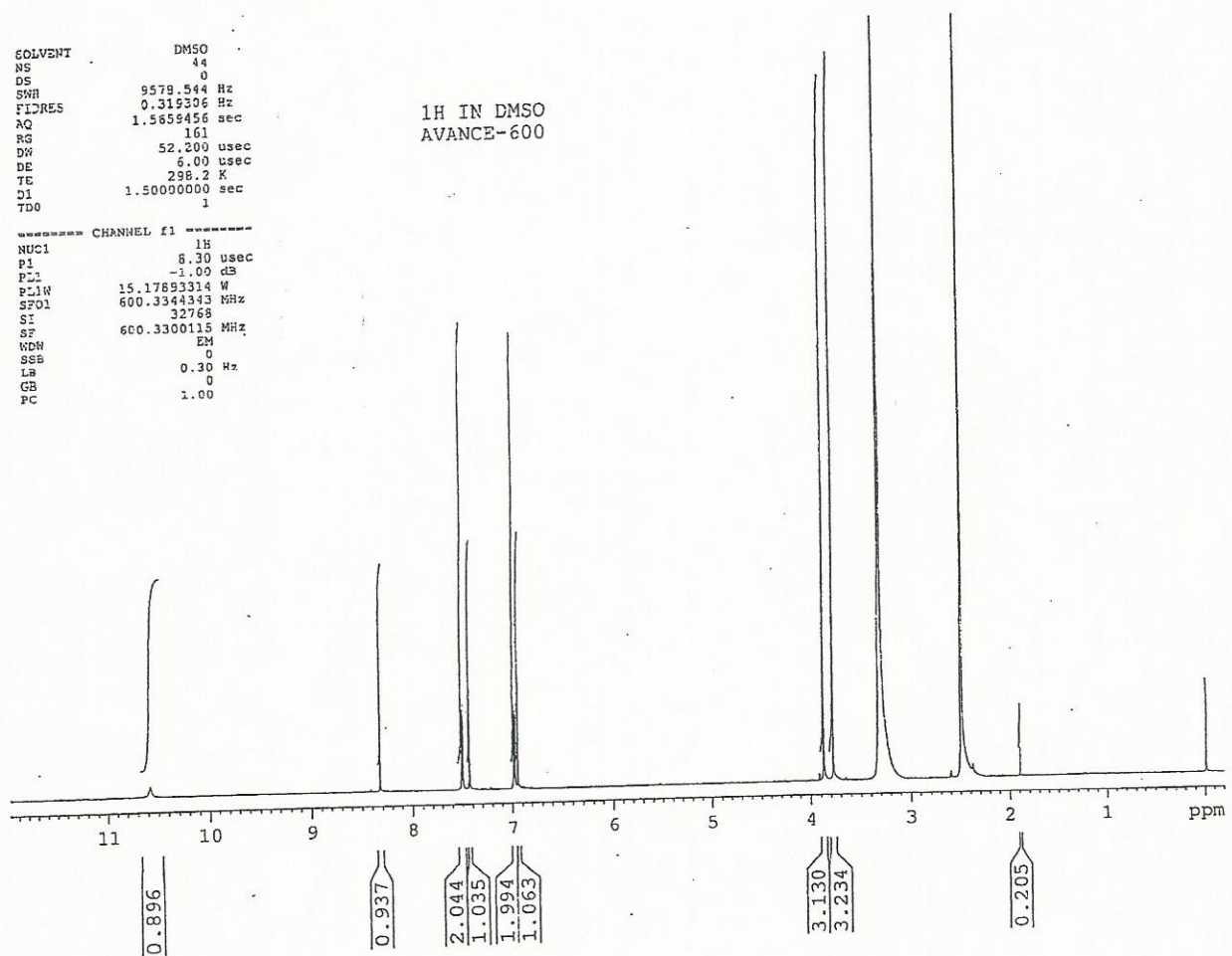
Catalog no.: 19-626
Product name: 6,4'-Dimethoxy-7-hydroxyisoflavone
Lot No.: 0306105



SOLVENT DMSO
NS 44
DS 0
SWH 9579.544 Hz
FIDRES 0.319306 Hz
AQ 1.5659456 sec
RG 161
DN 52.200 usec
DE 5.00 usec
TE 298.2 K
DI 1.5000000 sec
TD 1

1H IN DMSO
AVANCE-600

***** CHANNEL f1 *****
NUC1 1H
P1 8.30 usec
PL1 -1.00 dB
PL1W 15.17893314 W
SF01 600.3344343 MHz
SI 32768
SF 600.3300115 MHz
WDW EM
SSB 0
LB 0.30 Hz
GB 0
PC 1.00





INDOFINE Chemical Company, Inc.

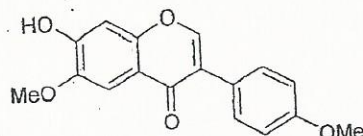
121 Stryker Lane, Bldg. 30, Suite 1 • Hillsborough, NJ 08844 • U.S.A.

Phone: (908) 359-6778 • FAX: (908) 359-1179

website: www.indofinechemical.com

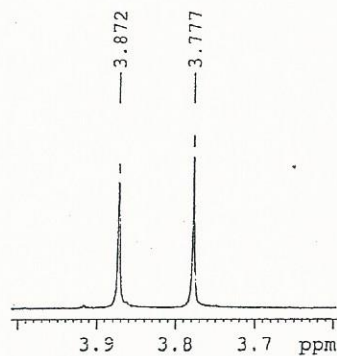
e-mail: chemical@indofinechemical.com

Catalog no.: 19-626
Product name: 6,4'-Dimethoxy-7-hydroxyisoflavone
Lot No.: 0306105



SOLVENT DMSO
NS 44
DS 0
SNH 5576.544 Hz
FIDRES 0.318306 Hz
AQ 1.5659456 sec
RG 151
DH 52.200 usec
DE 6.00 usec
TE 296.2 K
D1 1.5000000 sec
TD0 1

1H IN DMSO
AVANCE-600



----- CHANNEL f1 -----
NUC1 1H
P1 8.30 usec
PL1 -1.00 dB
PL1W 15.17693314 W
SFC1 600.3544343 MHz
SI 32768
SF 600.3300115 MHz
WDW EM
SSB 0
LB 0.30 Hz
GB 0
PC 1.00

